

# DISCOVER. CONNECT. ACHIEVE.

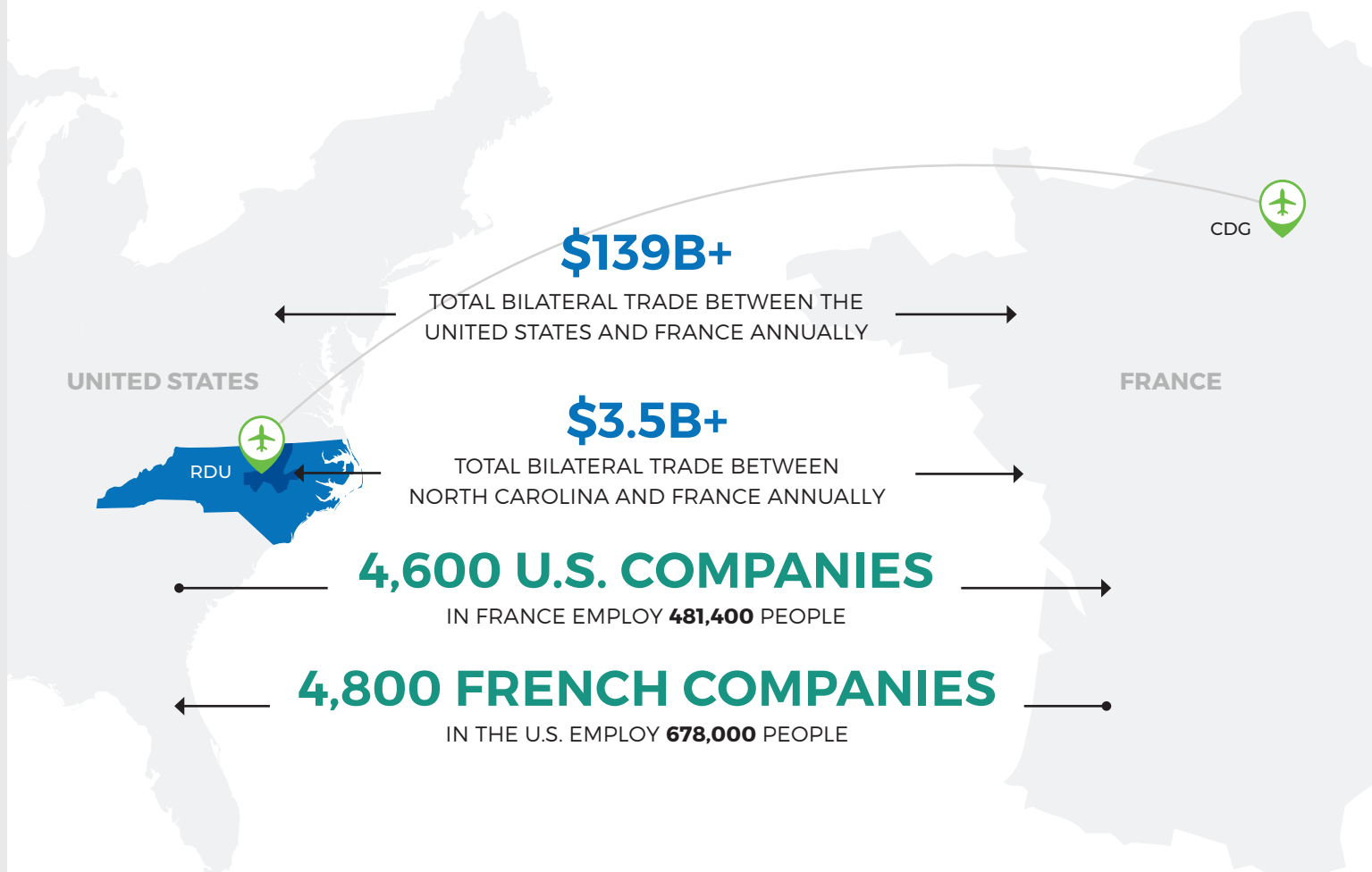
IN THE RESEARCH TRIANGLE REGION

REGIONAL PROFILE



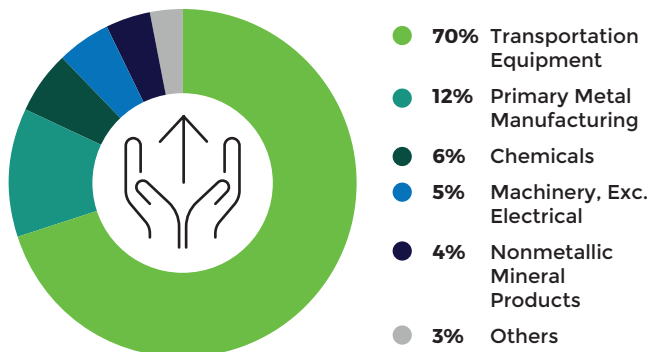
# A MUTUALLY BENEFICIAL PARTNERSHIP

North Carolina is a strategic investment for French companies. In the United States, French companies are the third largest foreign employers and in North Carolina, France is ranked fifth for jobs created by foreign companies, creating over 15,000 jobs. With a daily nonstop flight on Delta Air Lines from Raleigh (RDU) to Paris (CDG), access North Carolina in a matter of hours.



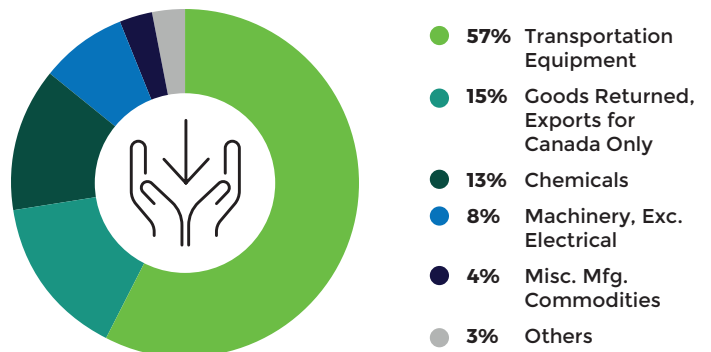
## North Carolina Exports to France

**\$1.5B+ ANNUALLY**



## North Carolina Imports from France

**\$2.1B+ ANNUALLY**



## BUSINESS ECOSYSTEM

The Research Triangle Region has a diverse business ecosystem with over 7,000 companies including 700+ foreign owned companies, across multiple industries including AgTech, CleanTech, Life Sciences, Technology and Advanced Manufacturing. From legendary corporations to disruptive startups, the Triangle Region welcomes businesses of all sizes to our innovative ecosystem.

### COMPANIES WHO CALL THE TRIANGLE REGION HOME

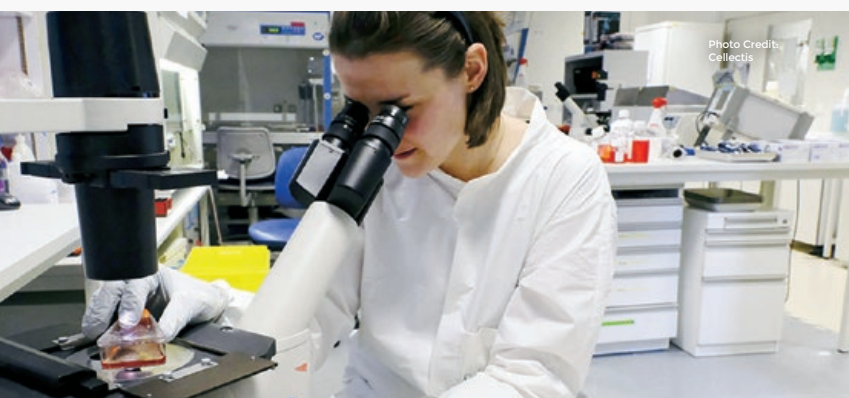


### COLLECTIS SELECTS TRIANGLE REGION

Paris-based biotechnology company Collectis selected Raleigh as the location for its first North American manufacturing facility in March of 2019. Collectis, a clinical-stage biopharmaceutical company developing a new generation of cancer therapies, is investing nearly \$70 million and plans to hire 200 scientists, engineers, analysts, manufacturing and operations personnel.

We benchmarked several locations within North Carolina and in other states and selected Raleigh, which combined multiple advantages, including a strong state support and willingness to welcome world-class innovative companies. Collectis' priorities are very much aligned to North Carolina's and we are pleased with this partnership to write this new page of our history.

André Chouluka,  
Chairman and CEO of Collectis



## EDUCATION

Located in the heart of North Carolina, the Research Triangle Region gets its name from the largest research park in the U.S. and three Tier 1 research universities – Duke, NC State and UNC Chapel Hill – located only minutes apart. 176,000 students make up the 10 colleges and universities and 7 community colleges, producing more than 42,000 annual graduates. 47% of the population older than 25 have a bachelor's degree or higher, making the area the 4<sup>th</sup> most educated region in the United States.

**Duke**  
UNIVERSITY

**15,892**

TOTAL STUDENTS

**#8**

BEST UNIVERSITY  
IN THE NATION

Data Source: Duke University,  
U.S. News & World Report,  
May 2019

10.5 miles

24.3 miles

25.3 miles

RESEARCH  
TRIANGLE PARK



THE UNIVERSITY  
of NORTH CAROLINA  
at CHAPEL HILL

**30,011**

TOTAL STUDENTS

**#5**

BEST PUBLIC UNIVERSITY  
IN THE NATION

Data Source: University of North Carolina  
at Chapel Hill, U.S. News & World Report, May 2019

**NC STATE UNIVERSITY**

**35,479**

TOTAL STUDENTS

**\$6.5B**

ANNUAL STATEWIDE  
ECONOMIC IMPACT

Data Source: NC State University, May 2019

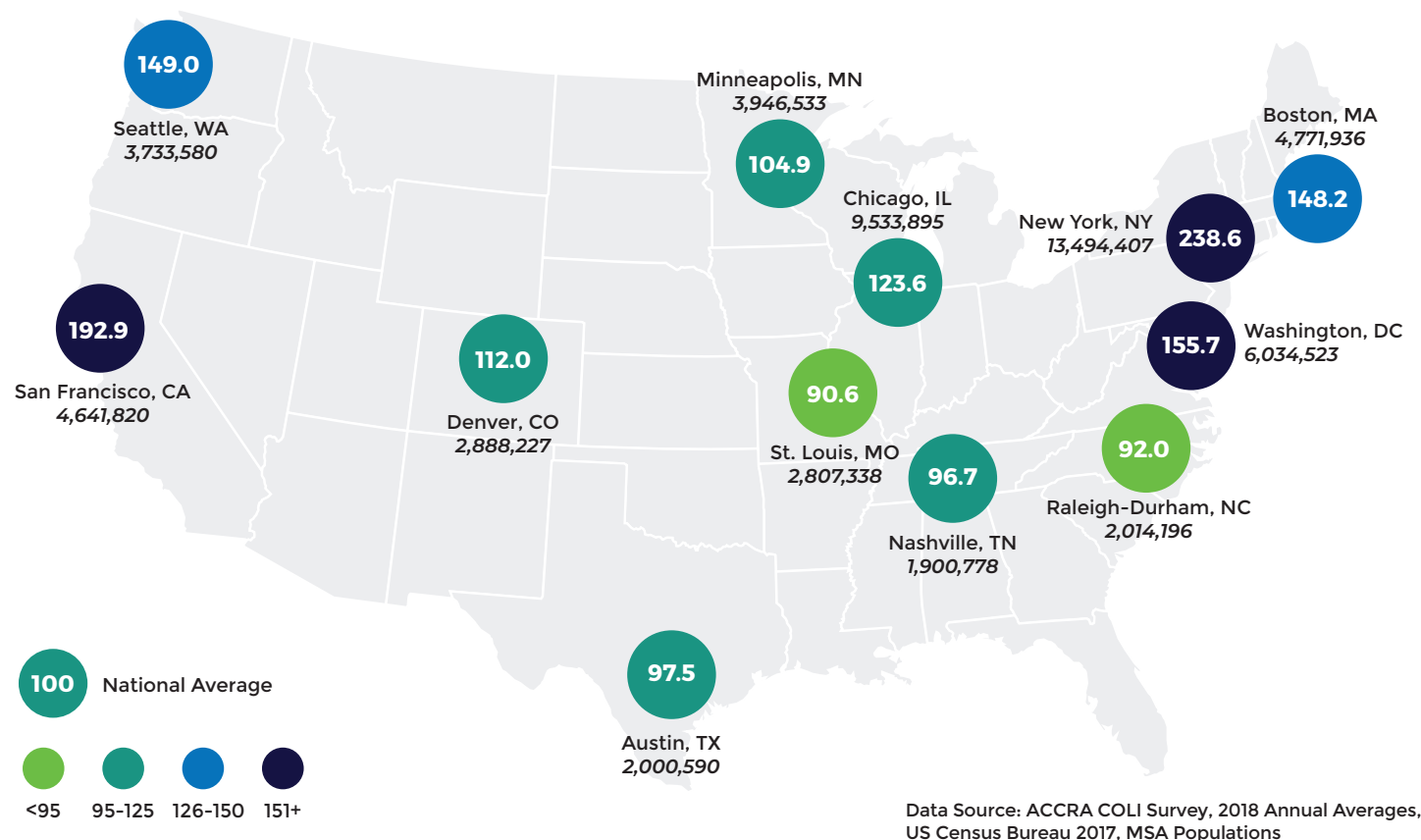


Photo Credit:  
Becky Kirkland/  
NC State University

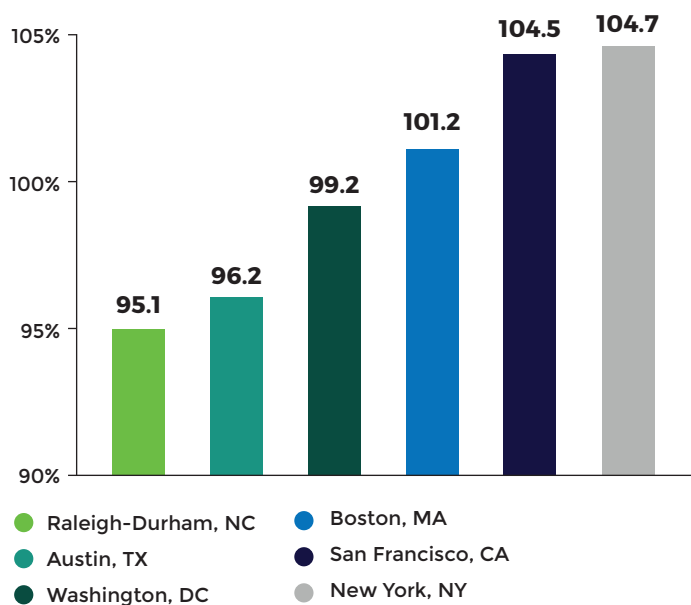


# REGIONAL COMPARISON

## Cost of Living Index and Population



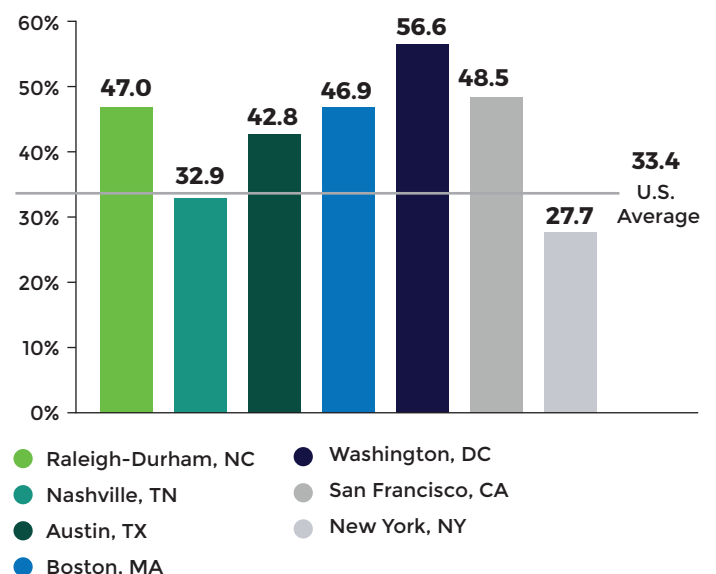
## Cost of Doing Business Index



Data Source: KPMG. 2016. "Competitive Alternatives: KPMG's Guide to International Business Locations Costs."

## Educational Attainment

### Population Over Age 25 with Bachelor's Degree or higher



Data Source: U.S. Census Bureau. 2018. Accessed through American Factfinder2. S1501

# TARGETED INDUSTRIES

## ADVANCED MANUFACTURING

**\$2.2 BILLION**

CONTRIBUTED TO GROSS  
REGIONAL PRODUCT

- **180** firms
- **12,570** employees
- **\$86,000** average salary
- **15.2%** 5-year growth rate\*



## AGTECH

**\$1.2 BILLION**

CONTRIBUTED TO GROSS  
REGIONAL PRODUCT

- **302** companies
- **7,140** employees
- **\$134,000** average salary
- **17.2%** 5-year growth rate\*



## TECHNOLOGY

**\$14.6 BILLION**

CONTRIBUTED TO GROSS  
REGIONAL PRODUCT

- **3,916** companies
- **59,900** employees
- **\$121,000** average salary
- **17.6%** 5-year growth rate\*



## LIFE SCIENCES

**\$9.8 BILLION**

CONTRIBUTED TO GROSS  
REGIONAL PRODUCT

- **569** companies
- **24,150** employees
- **\$142,000** average salary
- **12%** employment growth rate\*
- **4,400** annual life science graduates



## CLEANTECH

**\$4.6 BILLION**

CONTRIBUTION TO GROSS  
REGIONAL PRODUCT

- **1,859** companies
- **26,950** employees
- **\$113,000** average salary
- **24.4%** 5-year growth rate\*



\*2012-2017.

# STARTUP ECOSYSTEM

Business, academia and government converge in the Research Triangle Region to create an innovative environment and hub for entrepreneurs. The region's low cost of living combined with its co-working spaces, startup incubators, networking opportunities and local tech expertise fosters an innovative startup ecosystem.

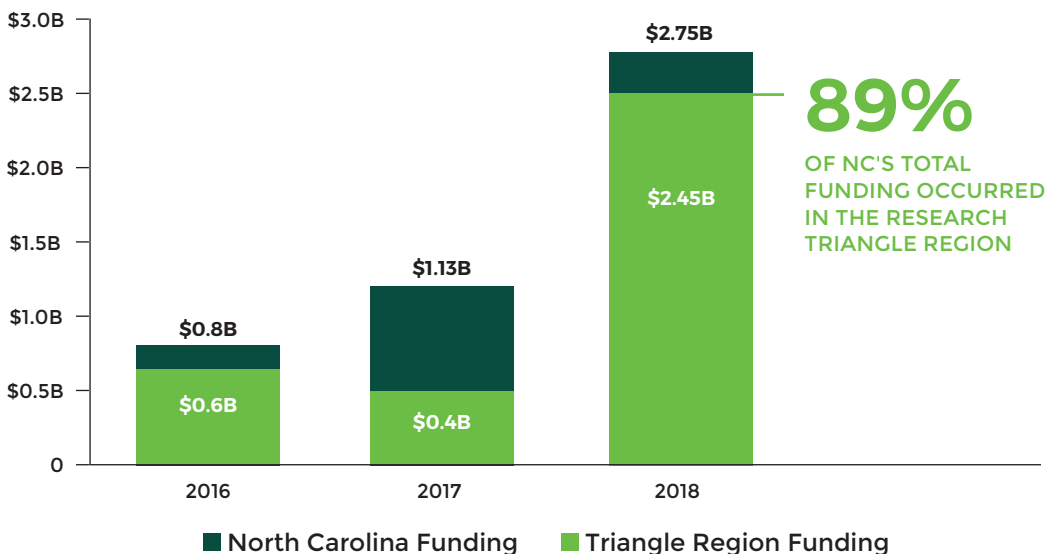
## Entrepreneurial Funding Raised

### Number of Deals

- North Carolina Deals
- Triangle Region Deals



### Amount of Funding



Data Source: Council for Entrepreneurial Development Innovators Report, 2016, 2017, 2018.



**77%**

OF DEALS MADE IN NC  
OCCURRED IN THE  
TRIANGLE REGION



**2,393+**

STARTUPS ESTABLISHED  
IN THE REGION



**\$1.25B**

A RECORD-BREAKING  
FUNDING DEAL IN NC,  
EPIC GAMES (CARY)



**\$27.00**

AVERAGE CLASS A RENTAL RATE  
(39% BELOW NATIONAL AVERAGE)



**1.2M**

SQUARE FEET OF CO-WORKING  
SPACE IN THE TRIANGLE



**25+**

VENTURE CAPITAL & ANGEL  
INVESTING FIRMS IN REGION

# CONNECT TO NORTH CAROLINA'S RESEARCH TRIANGLE REGION



## EASILY ACCESSIBLE BY RAIL, ROAD, SEA OR AIR

200 million U.S. and Canadian consumers within a two-day drive

Four deep water ports in less than a 300 mile radius

Rail: CSX, Norfolk Southern and North Carolina Railroad Company

Interstates: I-40, I-85, I-95



## RALEIGH-DURHAM INTERNATIONAL AIRPORT (RDU)

RANKED THE MOST CONNECTED MEDIUM-SIZED AIRPORT IN THE U.S.

**12.8** MILLION PASSENGERS  
IN 2018

**400+** DAILY FLIGHTS

7 international destinations including direct flights to London and Paris

